



UL Verification Services Inc.
7036 Snowdrift Road
Allentown, PA 18106
610-774-1300



Indoor Distribution Test Report

Relevant Standards
IES LM-79-2008, ANSI C82.77-2002

Prepared For
Rosco Laboratories Inc
52 Harbor View Ave
Stamford, CT 06902-5914
United States

Catalog Number
SL1 MIX with flat diffuser: LEDs tuned to 3200K
Order Number
12451557
Test Number
12451557.15

Test Date

2018-08-09

Prepared By

Cordaryl Cousar, Technician

Approved By

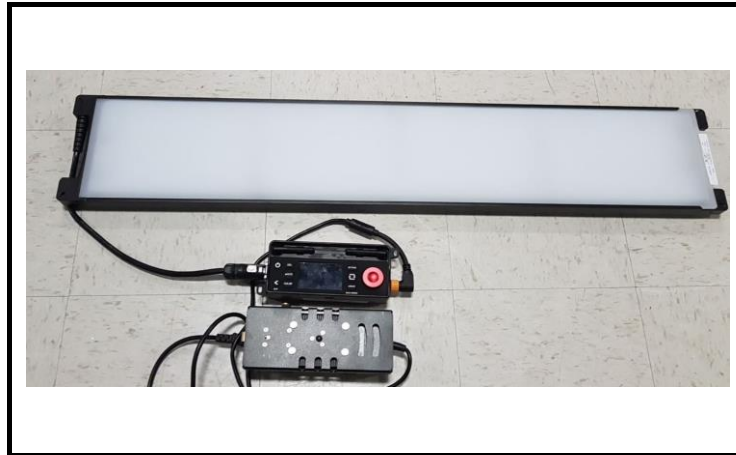
Kevin Rodriguez, Project Handler

The results contained in this report pertain only to the tested sample.
This report shall not be reproduced, except in full, without written approval of Underwriters Laboratories.
This report must not be used by the client to claim product certification, approval, or endorsement by
NVLAP, NIST, or any agency of the Federal Government.



Luminaire Description: Black formed aluminum housing, frosted plastic lens enclosure
Lamp: 576 white/colored LEDs
Mounting: Surface – Ceiling
Ballast/Driver: One Mean Well GST220A24-R7B

Luminaire



Luminaire Characteristics

Luminous Length: 44.00 in.
Luminous Width: 8.000 in.
Luminous Height: 0.25 in.

Summary of Results

Total Luminaire Output: 12730 Lumens
Luminaire Efficacy: 69.1 lm/w
Maximum Candela: 4405 Candela

Test Conditions

Test Temperature: 24.8 °C
Voltage: 120.0 VAC
Current: 1.551 A
Power: 184.3 W
Power Factor: 0.990
Frequency: 60 Hz
Current THD: 10.9 %

Laboratory results may not be representative of field performance
Ballast factors have not been applied



Distribution - Goniophotometer

Distribution Test Conditions

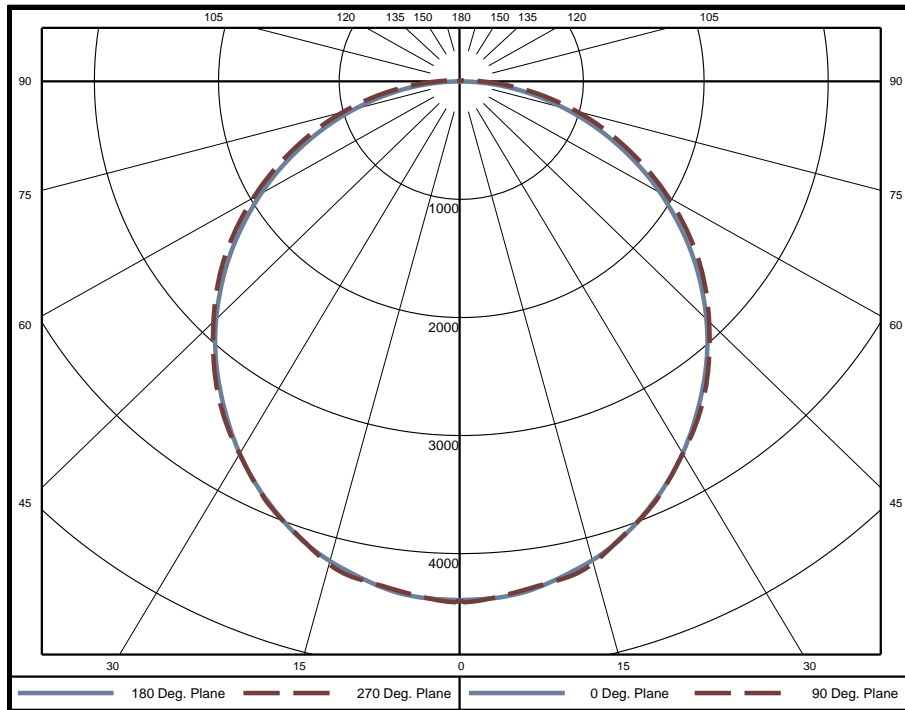
Temperature	Voltage	Current	Power	Power Factor	Frequency	Current THD
24.8 °C	120.0 VAC	1.551 A	184.3 W	0.990	60 Hz	10.9 %

Summary of Results

Spacing Criteria
 0-180: 1.23
 90-270: 1.24

Total Lumen Output: 12730 Lumens
Luminaire Efficacy: 69.1 lm/w
Maximum Candela: 4405 Candela

Polar Plot



Zonal Lumen Summary

Zone	Lumens	% of Luminaire	Zone	Lumens	% of Luminaire	Zone	Lumens	% of Luminaire
0-5	105	0.8%	60-65	854	6.7%	120-125	0	0.0%
5-10	309	2.4%	65-70	722	5.7%	125-130	0	0.0%
10-15	504	4.0%	70-75	576	4.5%	130-135	0	0.0%
15-20	678	5.3%	75-80	419	3.3%	135-140	0	0.0%
20-25	828	6.5%	80-85	262	2.1%	140-145	0	0.0%
25-30	946	7.4%	85-90	117	0.9%	145-150	0	0.0%
30-35	1034	8.1%	90-95	39	0.3%	150-155	0	0.0%
35-40	1090	8.6%	95-100	19	0.1%	155-160	0	0.0%
40-45	1110	8.7%	100-105	9	0.1%	160-165	0	0.0%
45-50	1095	8.6%	105-110	2	0.0%	165-170	0	0.0%
50-55	1047	8.2%	110-115	0	0.0%	170-175	0	0.0%
55-60	964	7.6%	115-120	0	0.0%	175-180	0	0.0%

Zone	Lumens	% of Luminaire
0-40	5494	43.2%
0-60	9710	76.3%
0-90	12660	99.5%
90-180	69	0.5%



Candela Tabulation

Horizontal Angle (Degrees)

Vertical Angle (Degrees)	0	22.5	45	67.5	90	112.5	135	157.5	180	202.5	225	247.5	270	292.5	315	337.5
	0	4388	4388	4388	4388	4388	4388	4388	4388	4388	4388	4388	4388	4388	4388	4388
	5	4370	4358	4364	4351	4356	4351	4364	4358	4370	4358	4364	4351	4356	4351	4364
	10	4297	4284	4298	4293	4299	4293	4298	4284	4297	4284	4298	4293	4299	4293	4298
	15	4191	4176	4190	4196	4217	4196	4190	4176	4191	4176	4190	4196	4217	4196	4190
	20	4044	4036	4048	4032	4038	4032	4048	4036	4044	4036	4048	4032	4038	4032	4048
	25	3853	3844	3853	3846	3860	3846	3853	3844	3853	3844	3853	3846	3860	3846	3853
	30	3636	3625	3633	3624	3638	3624	3633	3625	3636	3625	3633	3624	3638	3624	3633
	35	3388	3383	3397	3397	3416	3397	3397	3383	3388	3383	3397	3397	3416	3397	3383
	40	3130	3129	3140	3137	3155	3137	3140	3129	3130	3129	3140	3137	3155	3137	3140
	45	2848	2850	2861	2859	2878	2859	2861	2850	2848	2850	2861	2859	2878	2859	2861
	50	2545	2548	2562	2572	2596	2572	2562	2548	2545	2548	2562	2572	2596	2572	2562
	55	2223	2228	2248	2268	2289	2268	2248	2228	2223	2228	2248	2268	2289	2268	2248
	60	1895	1897	1917	1943	1968	1943	1917	1897	1895	1897	1917	1943	1968	1943	1917
	65	1559	1564	1587	1618	1638	1618	1587	1564	1559	1564	1587	1618	1638	1618	1587
	70	1222	1229	1261	1293	1311	1293	1261	1229	1222	1229	1261	1293	1311	1293	1261
	75	890	905	942	977	992	977	942	905	890	905	942	977	992	977	942
	80	573	591	633	666	682	666	633	591	573	591	633	666	682	666	633
	85	269	299	343	380	394	380	343	299	269	299	343	380	394	380	343
	90	13	71	122	160	176	160	122	71	13	71	122	160	176	160	122
	95	4	15	49	79	91	79	49	15	4	15	49	79	91	79	49
	100	2	0	21	46	56	46	21	0	2	0	21	46	56	46	21
	105	1	0	2	21	29	21	2	0	1	0	2	21	29	21	2
	110	0	0	0	1	6	1	0	0	0	0	0	1	6	1	0
	115	0	0	0	0	0	0	0	0	0	0	0	0	0	0	0
	120	0	0	0	0	0	0	0	0	0	0	0	0	0	0	0
	125	0	0	0	0	0	0	0	0	0	0	0	0	0	0	0
	130	0	0	0	0	0	0	0	0	0	0	0	0	0	0	0
	135	0	0	0	0	0	0	0	0	0	0	0	0	0	0	0
	140	0	0	0	0	0	0	0	0	0	0	0	0	0	0	0
	145	0	0	0	0	0	0	0	0	0	0	0	0	0	0	0
	150	0	0	0	0	0	0	0	0	0	0	0	0	0	0	0
	155	0	0	0	0	0	0	0	0	0	0	0	0	0	0	0
	160	0	0	0	0	0	0	0	0	0	0	0	0	0	0	0
	165	0	0	0	0	0	0	0	0	0	0	0	0	0	0	0
	170	0	0	0	0	0	0	0	0	0	0	0	0	0	0	0
	175	0	0	0	0	0	0	0	0	0	0	0	0	0	0	0
	180	0	0	0	0	0	0	0	0	0	0	0	0	0	0	0

Average Luminance (cd/m²)

Horizontal Angle (Degrees)

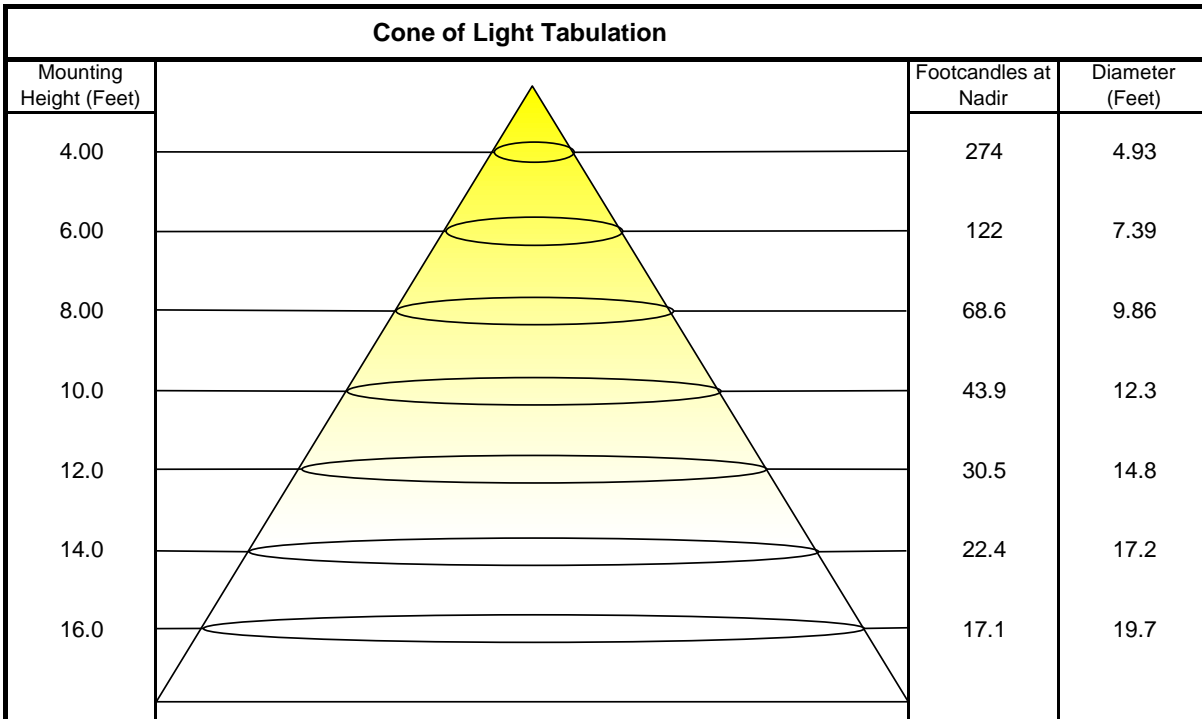
Vertical Angle (Degrees)	0	45	90
	0	19320	19320
	45	17640	17380
	55	16930	16820
	65	16040	16000
	75	14830	15110
	85	12770	14670



Coefficients of Utilization - Zonal Cavity Method

Effective Floor Cavity Reflectance 20%																		
Ceiling Cavity Reflectance	80				70				50			30			10			0
Wall Reflectance	70	50	30	10	70	50	30	10	50	30	10	50	30	10	50	30	10	0
Room Cavity Ratio (RCR)	** Values are expressed as percent of total lumen output delivered to the task surface **																	
0	119	119	119	119	116	116	116	116	111	111	111	106	106	106	102	102	102	99
1	108	103	98	94	105	101	96	93	96	93	90	92	89	87	88	86	84	82
2	98	89	82	76	95	87	81	75	84	78	73	80	76	72	77	73	70	68
3	89	78	70	63	87	77	69	63	74	67	61	71	65	60	68	63	59	57
4	82	69	60	53	79	68	59	53	65	58	52	63	57	51	61	55	51	48
5	75	62	53	46	73	61	52	46	58	51	45	56	50	44	54	49	44	42
6	69	56	47	40	67	55	46	40	53	45	39	51	44	39	49	43	39	36
7	64	50	42	35	62	50	41	35	48	40	35	46	40	35	45	39	34	32
8	60	46	37	31	58	45	37	31	44	36	31	43	36	31	41	35	31	29
9	56	42	34	28	54	42	34	28	40	33	28	39	33	28	38	32	28	26
10	52	39	31	26	51	38	31	26	37	30	25	36	30	25	35	29	25	23

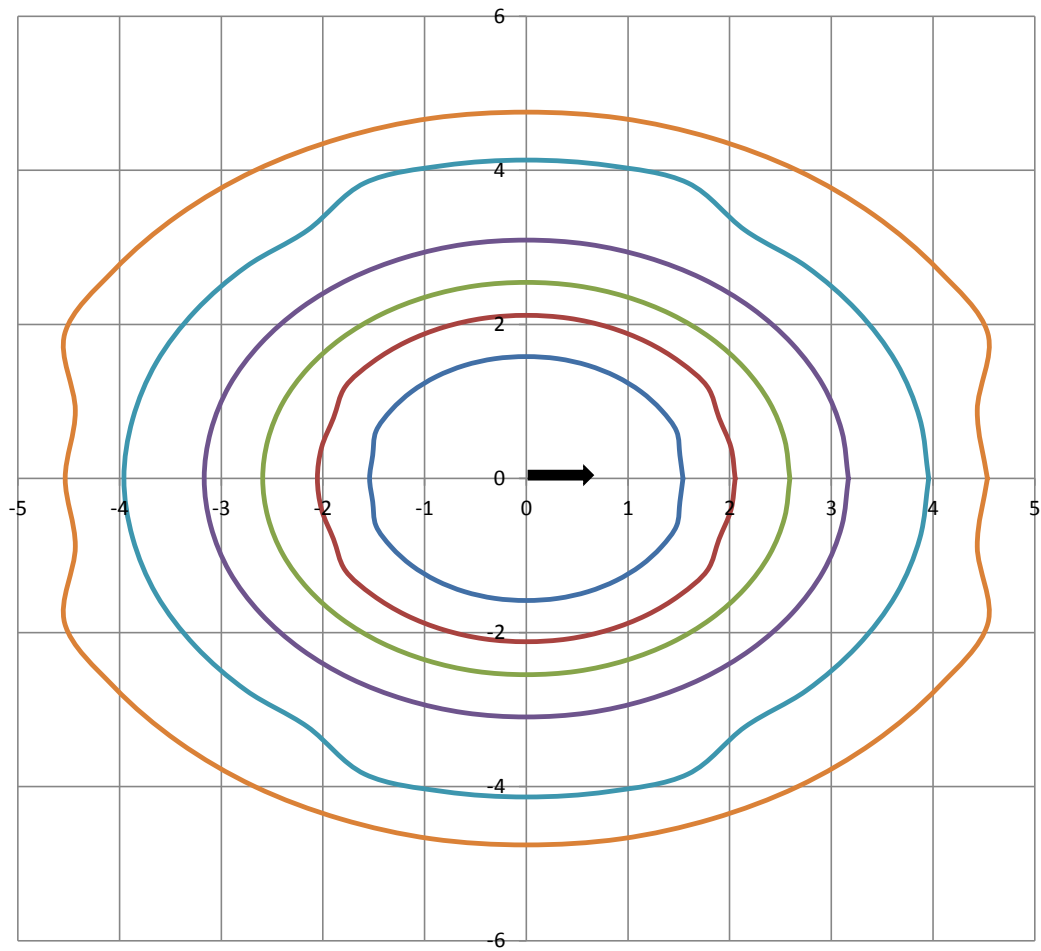
Beam and Field Information	
CIE Type:	Direct
Center Beam Intensity:	4388 Candela
Central Cone Intensity:	4378 Candela
Beam Flux:	8920.5 Lumens
Beam Angle (0-180):	110.9 Degrees
Beam Angle (90-270):	113.0 Degrees
Field Angle (0-180):	164.4 Degrees
Field Angle (90-270):	168.4 Degrees





ISOFootcandle Plot

Mounting Height - 8 Feet



Grid Lines in Units of Mounting Height

5 fc 2 fc 1 fc 0.5 fc 0.2 fc 0.1 fc