



UL Verification Services Inc.  
7036 Snowdrift Road  
Allentown, PA 18106  
610-774-1300



## Indoor Distribution Test Report

Relevant Standards  
IES LM-79-2008, ANSI C82.77-2002

Prepared For  
**Rosco Laboratories Inc**  
52 Harbor View Ave  
Stamford, CT 06902-5914  
United States

Catalog Number  
**SL1 SWITCH with dome: LEDs tuned to 3200K**  
Order Number  
12451557  
Test Number  
12451557.07

Test Date

2018-08-16

Prepared By

Cordaryl Cousar, Technician

Approved By

Kevin Rodriguez, Project Handler

The results contained in this report pertain only to the tested sample.  
This report shall not be reproduced, except in full, without written approval of Underwriters Laboratories.  
This report must not be used by the client to claim product certification, approval, or endorsement by  
NVLAP, NIST, or any agency of the Federal Government.



**Luminaire Description:** Black formed aluminum housing, frosted plastic lens enclosure  
**Lamp:** 2184 white LEDs  
**Mounting:** Surface – Ceiling  
**Ballast/Driver:** DMG Lumiere Switch

**Luminaire**



**Luminaire Characteristics**

Luminous Length: 44.00 in.  
Luminous Width: 8.000 in.  
Luminous Height: 2.00 in.

**Summary of Results**

Total Luminaire Output: 8082 Lumens  
Luminaire Efficacy: 64.3 lm/w  
Maximum Candela: 2330 Candela

**Test Conditions**

Test Temperature: 24.6 °C  
Voltage: 120.1 VAC  
Current: 1.059 A  
Power: 125.7 W  
Power Factor: 0.989  
Frequency: 60 Hz  
Current THD: 7.17 %

Laboratory results may not be representative of field performance  
Ballast factors have not been applied



## Distribution - Goniophotometer

### Distribution Test Conditions

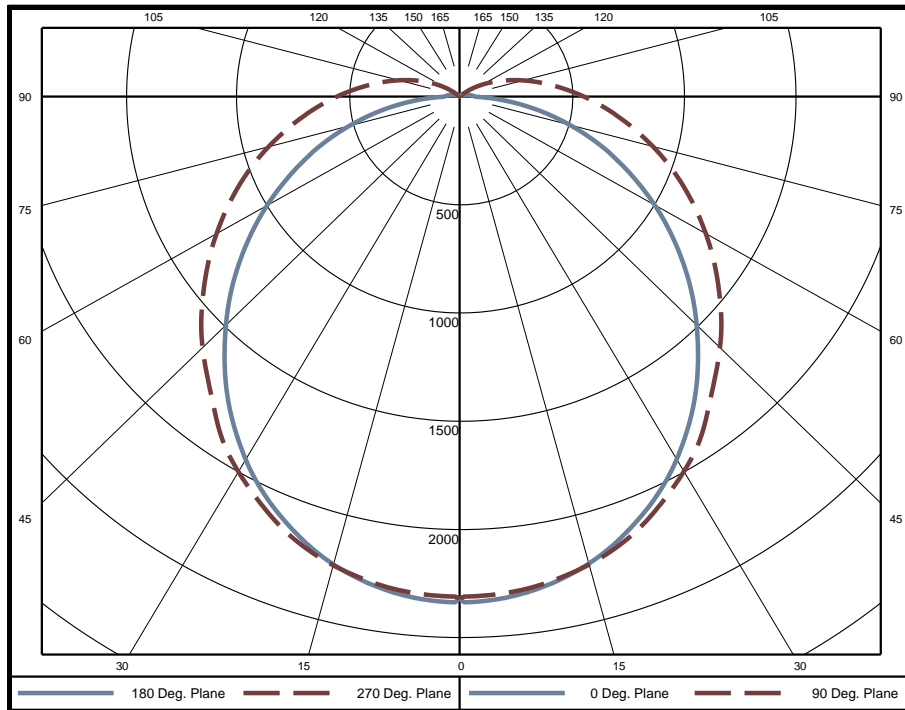
Temperature	Voltage	Current	Power	Power Factor	Frequency	Current THD
24.6 °C	120.1 VAC	1.059 A	125.7 W	0.989	60 Hz	7.17 %

### Summary of Results

**Spacing Criteria**  
 0-180: 1.24  
 90-270: 1.28

**Total Lumen Output:** 8082 Lumens  
**Luminaire Efficacy:** 64.3 lm/w  
**Maximum Candela:** 2330 Candela

### Polar Plot



### Zonal Lumen Summary

Zone	Lumens	% of Luminaire	Zone	Lumens	% of Luminaire	Zone	Lumens	% of Luminaire
0-5	55.2	0.7%	60-65	512.3	6.3%	120-125	10.8	0.1%
5-10	163.7	2.0%	65-70	463.2	5.7%	125-130	3.2	0.0%
10-15	266.9	3.3%	70-75	408.2	5.1%	130-135	0.2	0.0%
15-20	361.0	4.5%	75-80	348.2	4.3%	135-140	0	0.0%
20-25	442.5	5.5%	80-85	286.6	3.5%	140-145	0	0.0%
25-30	508.8	6.3%	85-90	227.1	2.8%	145-150	0	0.0%
30-35	558.4	6.9%	90-95	176.8	2.2%	150-155	0	0.0%
35-40	588.0	7.3%	95-100	134.5	1.7%	155-160	0	0.0%
40-45	600.4	7.4%	100-105	97.7	1.2%	160-165	0	0.0%
45-50	599.3	7.4%	105-110	66.4	0.8%	165-170	0	0.0%
50-55	582.8	7.2%	110-115	42.5	0.5%	170-175	0	0.0%
55-60	553.0	6.8%	115-120	24.2	0.3%	175-180	0	0.0%

Zone	Lumens	% of Luminaire
0-40	2945	36.4%
0-60	5280	65.3%
0-90	7526	93.1%
90-180	556	6.9%



### Candela Tabulation

Horizontal Angle (Degrees)

Vertical Angle (Degrees)	0	22.5	45	67.5	90	112.5	135	157.5	180	202.5	225	247.5	270	292.5	315	337.5
	0	2312	2312	2312	2312	2312	2312	2312	2312	2312	2312	2312	2312	2312	2312	2312
	5	2319	2315	2294	2294	2297	2294	2294	2315	2319	2315	2294	2294	2297	2294	2294
	10	2284	2283	2267	2268	2272	2268	2267	2283	2284	2283	2267	2268	2272	2268	2267
	15	2227	2228	2218	2225	2231	2225	2218	2228	2227	2228	2218	2225	2231	2225	2218
	20	2146	2151	2148	2161	2171	2161	2148	2151	2146	2151	2148	2161	2171	2161	2148
	25	2049	2054	2058	2077	2086	2077	2058	2054	2049	2054	2058	2077	2086	2077	2058
	30	1932	1939	1950	1978	1992	1978	1950	1939	1932	1939	1950	1978	1992	1978	1950
	35	1797	1806	1827	1863	1882	1863	1827	1806	1797	1806	1827	1863	1882	1863	1827
	40	1649	1660	1684	1726	1749	1726	1684	1660	1649	1660	1684	1726	1749	1726	1684
	45	1492	1505	1542	1604	1634	1604	1542	1505	1492	1505	1542	1604	1634	1604	1542
	50	1334	1349	1401	1479	1512	1479	1401	1349	1334	1349	1401	1479	1512	1479	1401
	55	1169	1188	1260	1350	1386	1350	1260	1188	1169	1188	1260	1350	1386	1350	1260
	60	1003	1025	1122	1222	1260	1222	1122	1025	1003	1025	1122	1222	1260	1222	1122
	65	835	865	989	1096	1135	1096	989	865	835	865	989	1096	1135	1096	989
	70	673	718	859	972	1010	972	859	718	673	718	859	972	1010	972	859
	75	507	581	735	849	886	849	735	581	507	581	735	849	886	849	735
	80	346	450	616	729	766	729	616	450	346	450	616	729	766	729	616
	85	191	333	502	618	653	618	502	333	191	333	502	618	653	618	502
	90	63	236	402	514	549	514	402	236	63	236	402	514	549	514	402
	95	50	157	310	416	451	416	310	157	50	157	310	416	451	416	310
	100	38	94	230	329	364	329	230	94	38	94	230	329	364	329	230
	105	27	45	160	252	285	252	160	45	27	45	160	252	285	252	160
	110	18	14	100	184	214	184	100	14	18	14	100	184	214	184	100
	115	10	6	51	125	152	125	51	6	10	6	51	125	152	125	51
	120	4	1	13	74	98	74	13	1	4	1	13	74	98	74	13
	125	0	0	0	31	50	31	0	0	0	0	31	50	31	0	0
	130	0	0	0	2	11	2	0	0	0	0	2	11	2	0	0
	135	0	0	0	0	0	0	0	0	0	0	0	0	0	0	0
	140	0	0	0	0	0	0	0	0	0	0	0	0	0	0	0
	145	0	0	0	0	0	0	0	0	0	0	0	0	0	0	0
	150	0	0	0	0	0	0	0	0	0	0	0	0	0	0	0
	155	0	0	0	0	0	0	0	0	0	0	0	0	0	0	0
	160	0	0	0	0	0	0	0	0	0	0	0	0	0	0	0
	165	0	0	0	0	0	0	0	0	0	0	0	0	0	0	0
	170	0	0	0	0	0	0	0	0	0	0	0	0	0	0	0
	175	0	0	0	0	0	0	0	0	0	0	0	0	0	0	0
	180	0	0	0	0	0	0	0	0	0	0	0	0	0	0	0

### Average Luminance (cd/m<sup>2</sup>)

Horizontal Angle (Degrees)

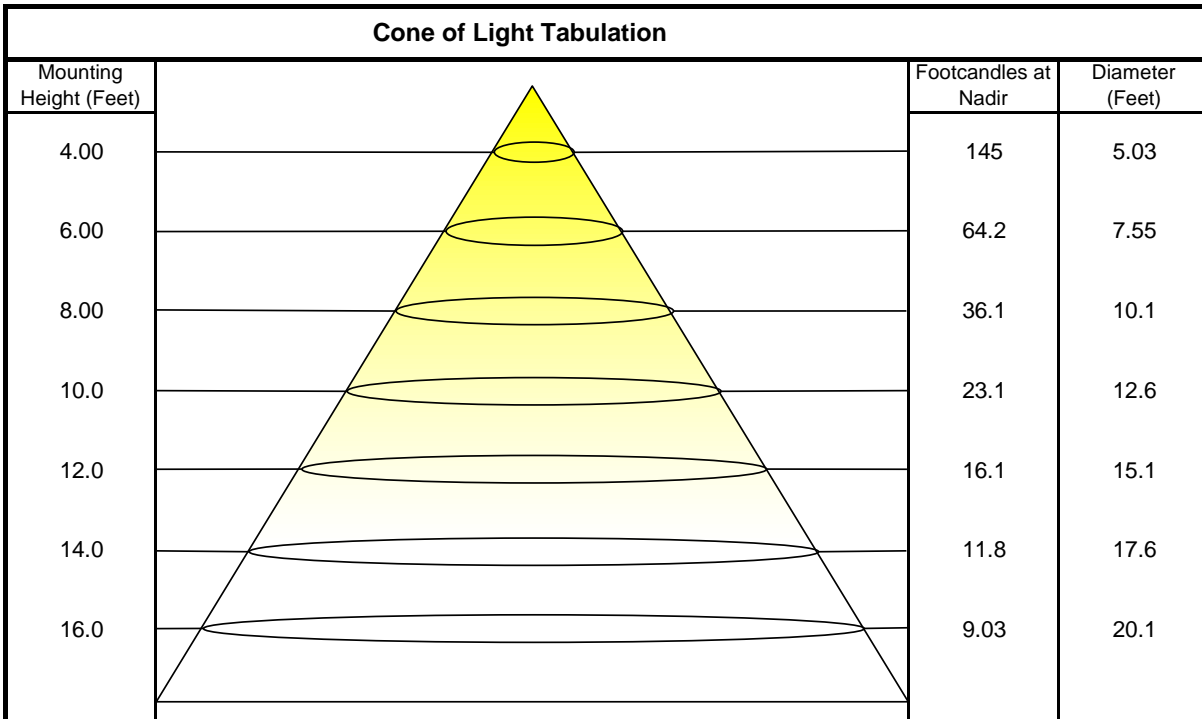
Vertical Angle (Degrees)	0	45	90
	0	10180	10180
	45	8887	8139
	55	8428	7841
	65	7925	7699
	75	7378	7798
	85	6354	8557



### Coefficients of Utilization - Zonal Cavity Method

Effective Floor Cavity Reflectance 20%																		
Ceiling Cavity Reflectance	80				70				50			30			10			0
Wall Reflectance	70	50	30	10	70	50	30	10	50	30	10	50	30	10	50	30	10	0
Room Cavity Ratio (RCR)	** Values are expressed as percent of total lumen output delivered to the task surface **																	
0	117	117	117	117	114	114	114	114	107	107	107	101	101	101	96	96	96	93
1	105	99	94	89	101	96	91	87	90	87	83	85	82	79	81	78	76	73
2	95	85	78	71	91	83	76	70	78	72	67	74	69	64	70	66	62	59
3	86	74	65	58	83	72	64	57	68	61	55	64	58	54	61	56	52	49
4	78	65	56	49	75	64	55	48	60	53	47	57	51	45	54	49	44	42
5	72	58	49	42	69	57	48	41	54	46	40	51	44	39	48	43	38	36
6	66	52	43	36	64	51	42	36	48	41	35	46	39	34	44	38	33	31
7	61	47	38	32	59	46	38	32	44	36	31	42	35	30	40	34	29	27
8	57	43	34	28	55	42	34	28	40	33	28	38	32	27	37	31	26	24
9	53	40	31	25	52	39	31	25	37	30	25	35	29	24	34	28	24	22
10	50	36	28	23	48	36	28	23	34	27	22	33	26	22	32	26	22	20

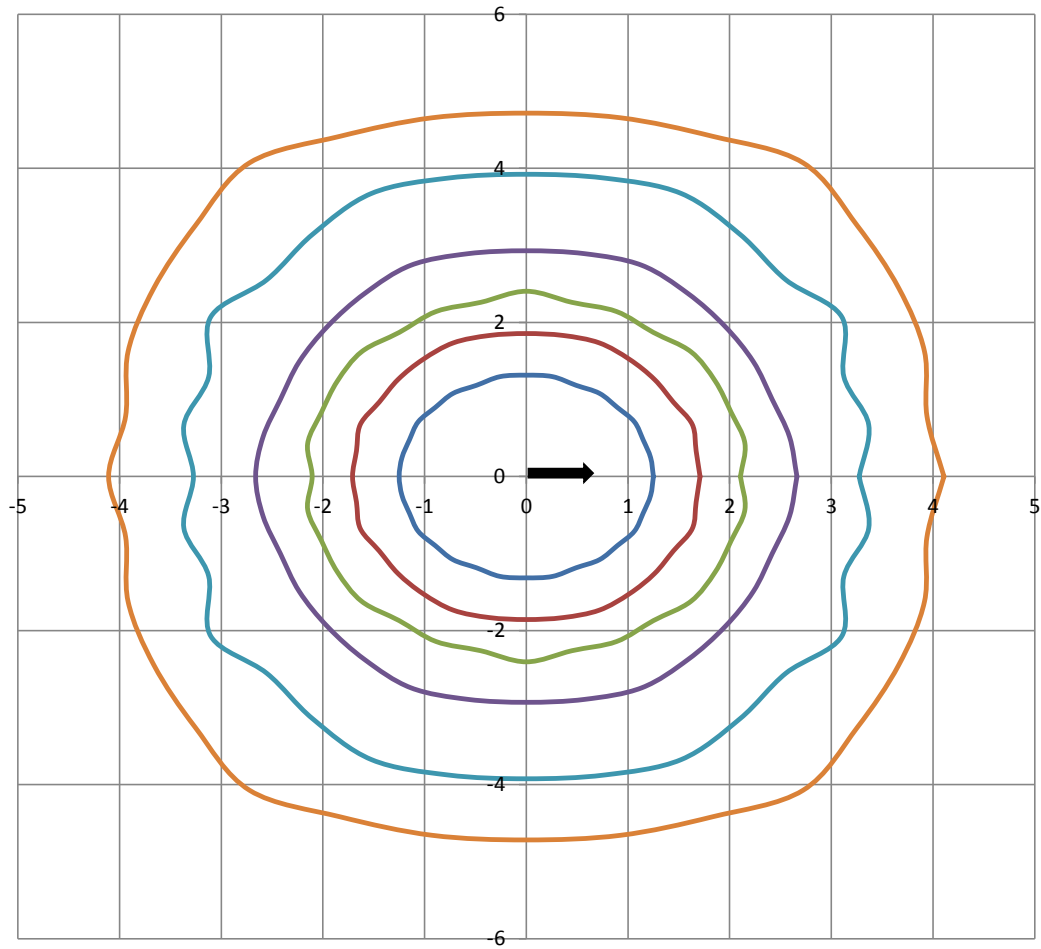
Beam and Field Information	
CIE Type:	Direct
Center Beam Intensity:	2312 Candela
Central Cone Intensity:	2309 Candela
Beam Flux:	5221.9 Lumens
Beam Angle (0-180):	110.8 Degrees
Beam Angle (90-270):	128.3 Degrees
Field Angle (0-180):	167.4 Degrees
Field Angle (90-270):	217.5 Degrees





## ISOFootcandle Plot

Mounting Height - 8 Feet



Grid Lines in Units of Mounting Height

5 fc    2 fc    1 fc    0.5 fc    0.2 fc    0.1 fc