



UL Verification Services Inc.
7036 Snowdrift Road
Allentown, PA 18106
610-774-1300



Indoor Distribution Test Report

Relevant Standards
IES LM-79-2008, ANSI C82.77-2002

Prepared For
Rosco Laboratories Inc
52 Harbor View Ave
Stamford, CT 06902-5914
United States

Catalog Number
MINI MIX with dome diffuser: LEDs tuned to 3200K
Order Number
12451557
Test Number
12451557.13

Test Date

2018-08-10

Prepared By

Cordaryl Cousar, Technician

Approved By

Kevin Rodriguez, Project Handler

The results contained in this report pertain only to the tested sample.
This report shall not be reproduced, except in full, without written approval of Underwriters Laboratories.
This report must not be used by the client to claim product certification, approval, or endorsement by
NVLAP, NIST, or any agency of the Federal Government.



Luminaire Description: Black formed aluminum housing, frosted plastic lens enclosure
Lamp: 288 white/colored LEDs
Mounting: Surface – Ceiling
Ballast/Driver: One Mean Well GS120A24-P1M

Luminaire



Luminaire Characteristics

Luminous Length: 23.00 in.
Luminous Width: 8.000 in.
Luminous Height: 2.00 in.

Summary of Results

Total Luminaire Output: 6362 Lumens
Luminaire Efficacy: 63.2 lm/w
Maximum Candela: 1772 Candela

Test Conditions

Test Temperature: 24.8 °C
Voltage: 120.0 VAC
Current: 0.8416 A
Power: 100.7 W
Power Factor: 0.997
Frequency: 60 Hz
Current THD: 4.42 %

Laboratory results may not be representative of field performance
Ballast factors have not been applied



Distribution - Goniophotometer

Distribution Test Conditions

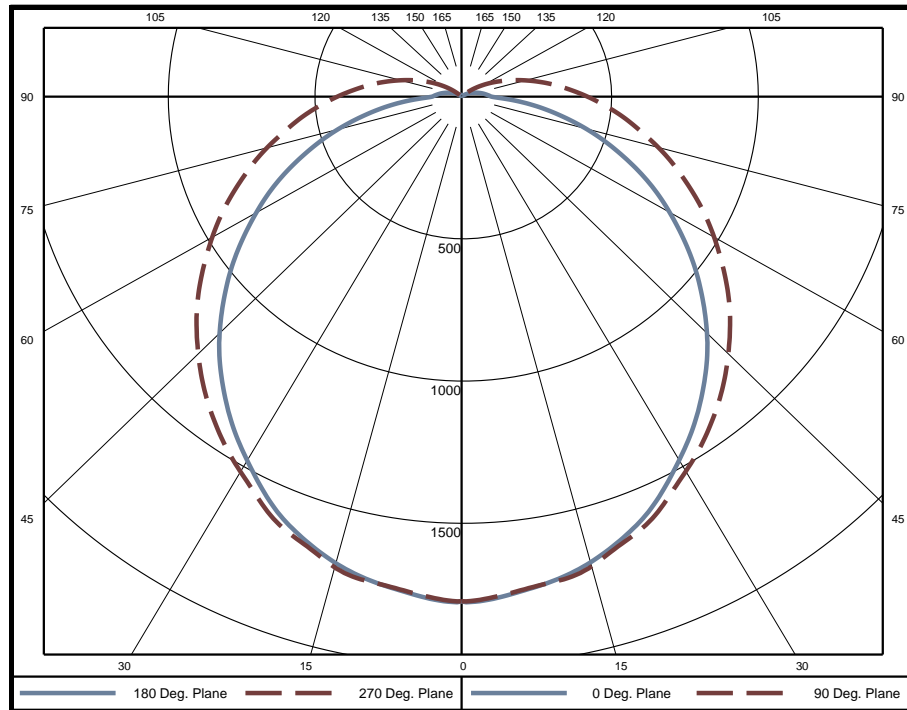
Temperature	Voltage	Current	Power	Power Factor	Frequency	Current THD
24.8 °C	120.0 VAC	0.8416 A	100.7 W	0.997	60 Hz	4.42 %

Summary of Results

Spacing Criteria
 0-180: 1.24
 90-270: 1.28

Total Lumen Output: 6362 Lumens
Luminaire Efficacy: 63.2 lm/w
Maximum Candela: 1772 Candela

Polar Plot



Zonal Lumen Summary

Zone	Lumens	% of Luminaire	Zone	Lumens	% of Luminaire	Zone	Lumens	% of Luminaire
0-5	42.0	0.7%	60-65	409.0	6.4%	120-125	9.6	0.2%
5-10	124.2	2.0%	65-70	370.6	5.8%	125-130	3.1	0.0%
10-15	203.1	3.2%	70-75	326.8	5.1%	130-135	0.3	0.0%
15-20	274.4	4.3%	75-80	279.3	4.4%	135-140	0	0.0%
20-25	337.2	5.3%	80-85	232.7	3.7%	140-145	0	0.0%
25-30	387.2	6.1%	85-90	186.5	2.9%	145-150	0	0.0%
30-35	426.6	6.7%	90-95	146.6	2.3%	150-155	0	0.0%
35-40	454.3	7.1%	95-100	113.0	1.8%	155-160	0	0.0%
40-45	469.3	7.4%	100-105	82.6	1.3%	160-165	0	0.0%
45-50	470.9	7.4%	105-110	56.7	0.9%	165-170	0	0.0%
50-55	460.6	7.2%	110-115	36.2	0.6%	170-175	0	0.0%
55-60	438.8	6.9%	115-120	20.8	0.3%	175-180	0	0.0%

Zone	Lumens	% of Luminaire
0-40	2249	35.4%
0-60	4089	64.3%
0-90	5894	92.6%
90-180	469	7.4%



Candela Tabulation

Horizontal Angle (Degrees)

Vertical Angle (Degrees)	0	22.5	45	67.5	90	112.5	135	157.5	180	202.5	225	247.5	270	292.5	315	337.5
	0	1768	1768	1768	1768	1768	1768	1768	1768	1768	1768	1768	1768	1768	1768	1768
	5	1754	1751	1748	1748	1749	1748	1748	1751	1754	1751	1748	1748	1749	1748	1751
	10	1727	1725	1725	1728	1729	1728	1725	1725	1727	1725	1725	1728	1729	1728	1725
	15	1689	1687	1692	1699	1702	1699	1692	1687	1689	1687	1692	1699	1702	1699	1692
	20	1633	1632	1637	1645	1648	1645	1637	1632	1633	1632	1637	1645	1648	1645	1637
	25	1561	1562	1571	1584	1589	1584	1571	1562	1561	1562	1571	1584	1589	1584	1571
	30	1471	1474	1487	1505	1513	1505	1487	1474	1471	1474	1487	1505	1513	1505	1487
	35	1380	1385	1404	1429	1440	1429	1404	1385	1380	1385	1404	1429	1440	1429	1404
	40	1281	1288	1313	1345	1359	1345	1313	1288	1281	1288	1313	1345	1359	1345	1313
	45	1173	1182	1214	1254	1270	1254	1214	1182	1173	1182	1214	1254	1270	1254	1214
	50	1055	1068	1110	1158	1179	1158	1110	1068	1055	1068	1110	1158	1179	1158	1110
	55	935	950	1003	1060	1080	1060	1003	950	935	950	1003	1060	1080	1060	1003
	60	811	831	896	958	980	958	896	831	811	831	896	958	980	958	896
	65	689	714	792	860	881	860	792	714	689	714	792	860	881	860	792
	70	559	595	687	758	780	758	687	595	559	595	687	758	780	758	687
	75	434	485	588	663	684	663	588	485	434	485	588	663	684	663	588
	80	309	382	493	569	589	569	493	382	309	382	493	569	589	569	493
	85	192	293	408	485	503	485	408	293	192	293	408	485	503	485	408
	90	97	215	328	402	421	402	328	215	97	215	328	402	421	402	328
	95	79	152	256	325	346	325	256	152	79	152	256	325	346	325	256
	100	64	101	192	256	279	256	192	101	64	101	192	256	279	256	192
	105	48	59	134	194	217	194	134	59	48	59	134	194	217	194	134
	110	35	30	84	140	163	140	84	30	35	30	84	140	163	140	84
	115	23	16	43	95	116	95	43	16	23	16	43	95	116	95	43
	120	13	8	14	57	75	57	14	8	13	8	14	57	75	57	14
	125	4	1	0	26	40	26	0	1	4	1	0	26	40	26	0
	130	0	0	0	4	13	4	0	0	0	0	0	4	13	4	0
	135	0	0	0	0	0	0	0	0	0	0	0	0	0	0	0
	140	0	0	0	0	0	0	0	0	0	0	0	0	0	0	0
	145	0	0	0	0	0	0	0	0	0	0	0	0	0	0	0
	150	0	0	0	0	0	0	0	0	0	0	0	0	0	0	0
	155	0	0	0	0	0	0	0	0	0	0	0	0	0	0	0
	160	0	0	0	0	0	0	0	0	0	0	0	0	0	0	0
	165	0	0	0	0	0	0	0	0	0	0	0	0	0	0	0
	170	0	0	0	0	0	0	0	0	0	0	0	0	0	0	0
	175	0	0	0	0	0	0	0	0	0	0	0	0	0	0	0
	180	0	0	0	0	0	0	0	0	0	0	0	0	0	0	0

Average Luminance (cd/m²)

Horizontal Angle (Degrees)

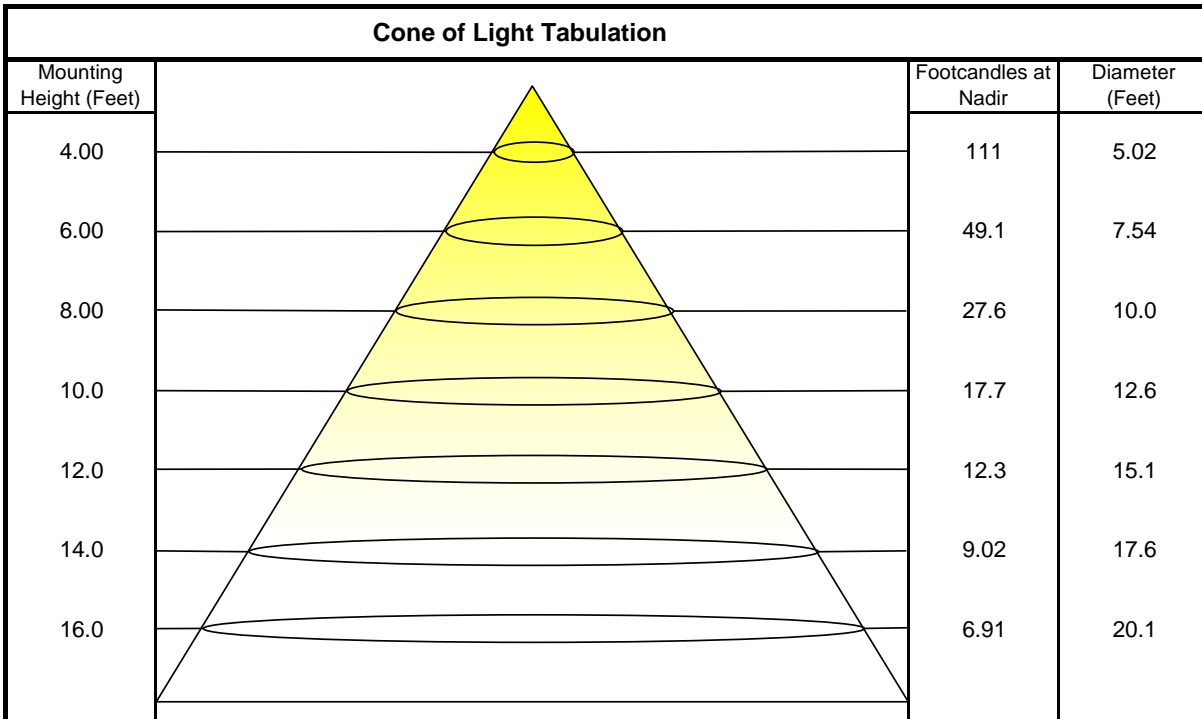
Vertical Angle (Degrees)	0	45	90
	0	14900	14900
	45	12860	12110
	55	12220	11690
	65	11570	11430
	75	10660	11510
	85	9327	10600



Coefficients of Utilization - Zonal Cavity Method

Effective Floor Cavity Reflectance 20%																		
Ceiling Cavity Reflectance	80				70				50			30			10			0
Wall Reflectance	70	50	30	10	70	50	30	10	50	30	10	50	30	10	50	30	10	0
Room Cavity Ratio (RCR)	** Values are expressed as percent of total lumen output delivered to the task surface **																	
0	117	117	117	117	114	114	114	114	107	107	107	101	101	101	95	95	95	93
1	105	99	94	89	101	96	91	87	90	86	83	85	82	79	80	77	75	72
2	94	85	77	71	91	82	75	69	77	71	66	73	68	64	69	65	61	58
3	85	74	65	58	82	72	63	57	67	60	55	64	58	53	60	55	51	48
4	78	65	56	48	75	63	54	48	60	52	46	56	50	45	53	48	43	41
5	71	58	48	41	69	56	47	41	53	45	40	50	44	38	48	42	37	35
6	66	52	43	36	63	51	42	35	48	40	34	46	39	34	43	37	33	30
7	61	47	38	31	59	46	37	31	43	36	30	41	35	30	39	33	29	27
8	57	43	34	28	55	42	33	28	40	32	27	38	31	26	36	30	26	24
9	53	39	31	25	51	38	30	25	37	29	24	35	28	24	33	28	23	21
10	50	36	28	23	48	35	28	22	34	27	22	32	26	21	31	25	21	19

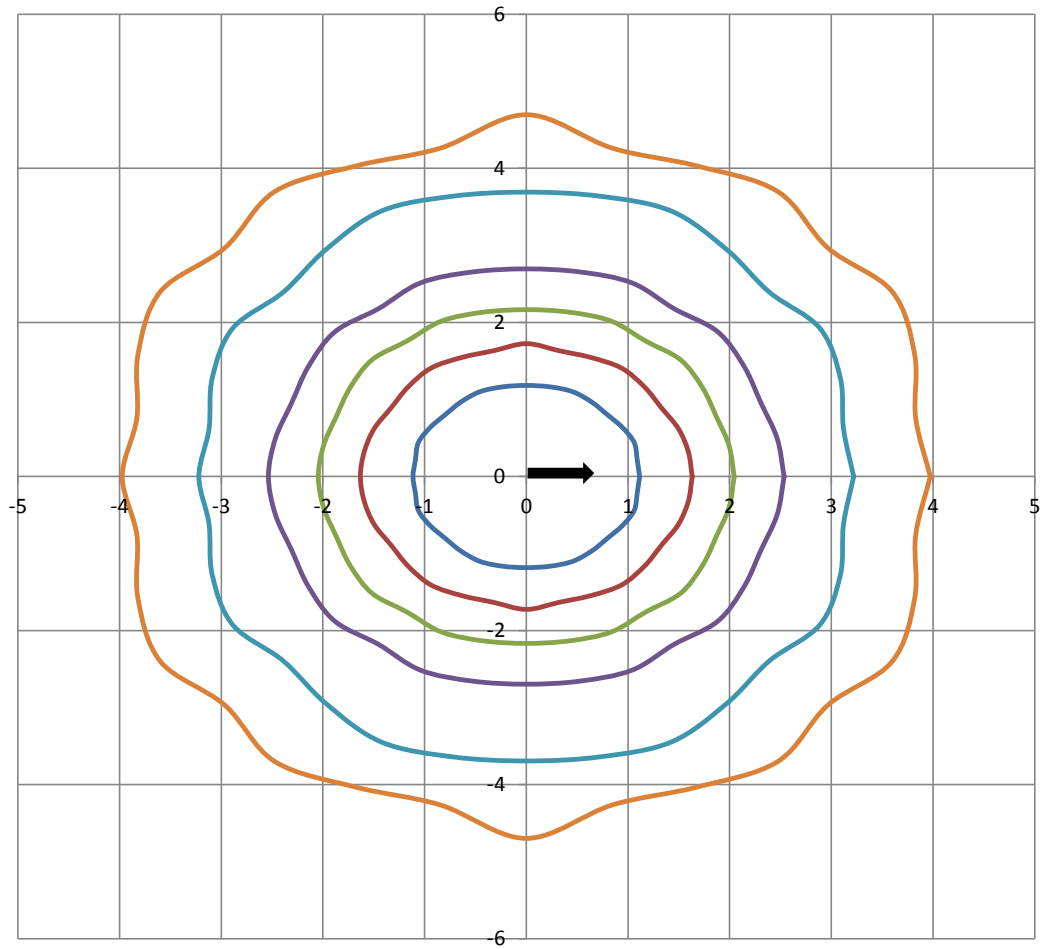
Beam and Field Information	
CIE Type:	Direct
Center Beam Intensity:	1768 Candela
Central Cone Intensity:	1761 Candela
Beam Flux:	4164.1 Lumens
Beam Angle (0-180):	114.1 Degrees
Beam Angle (90-270):	129.7 Degrees
Field Angle (0-180):	171.3 Degrees
Field Angle (90-270):	217.3 Degrees





ISOFootcandle Plot

Mounting Height - 8 Feet



Grid Lines in Units of Mounting Height

5 fc 2 fc 1 fc 0.5 fc 0.2 fc 0.1 fc